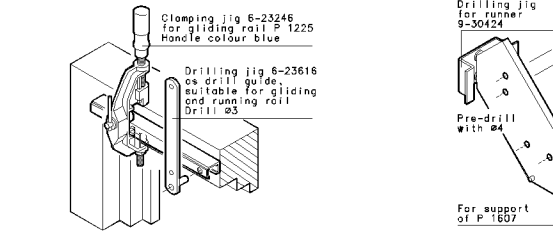
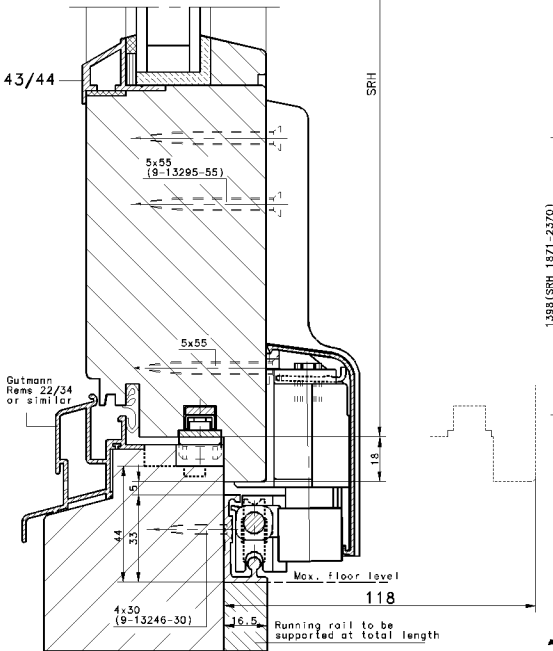
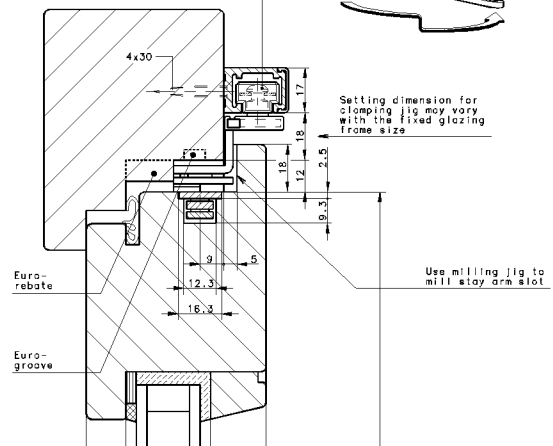
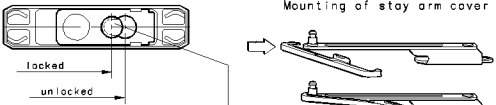
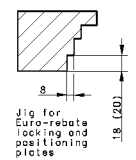
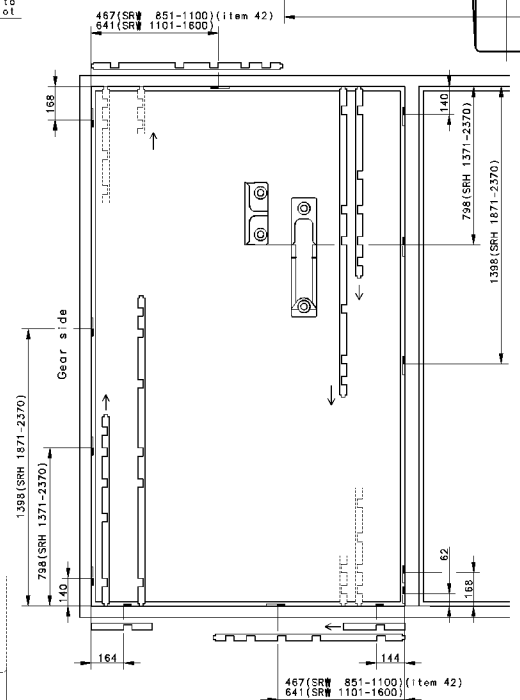
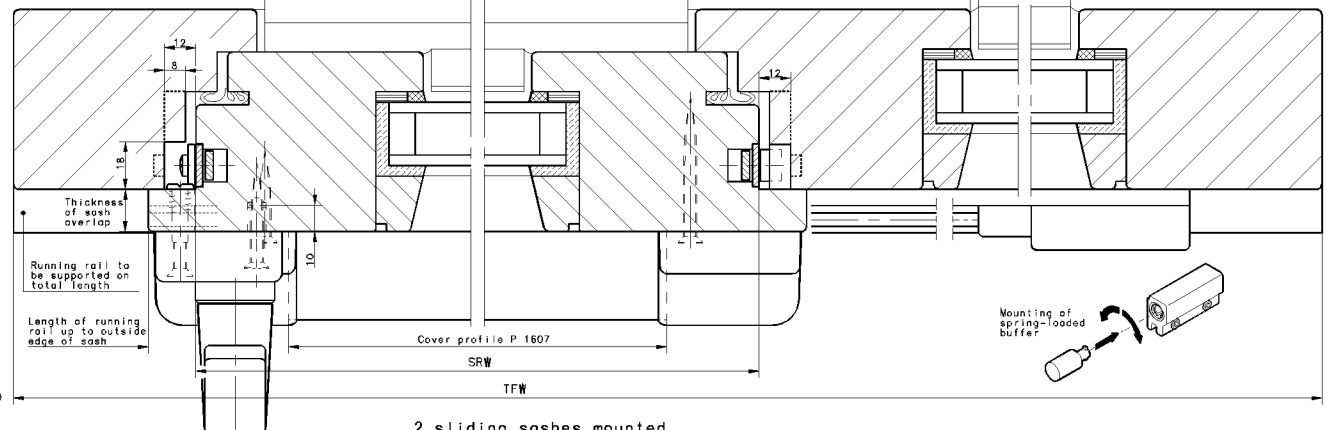


Locking of stay arm pin into glider with a 4 mm Allen key, refer to mounting instructions pt. 14

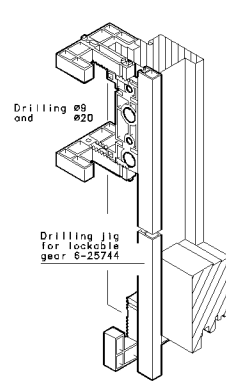


Scheme A
Sliding sash/ fixglazed sash

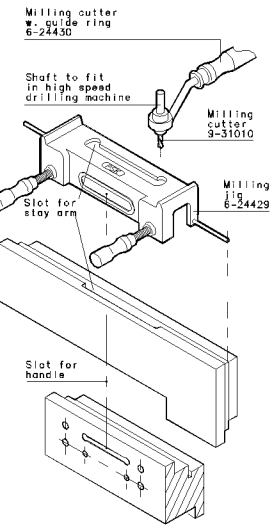
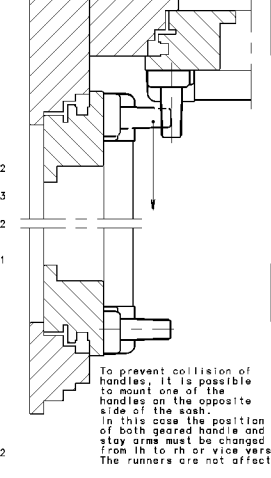


- SRH 1371-1870
Item no. 9-30921-02
- SRH 1871-2370
Item no. 9-30921-03
- SRW 1101-1600
Item no. 9-30921-02

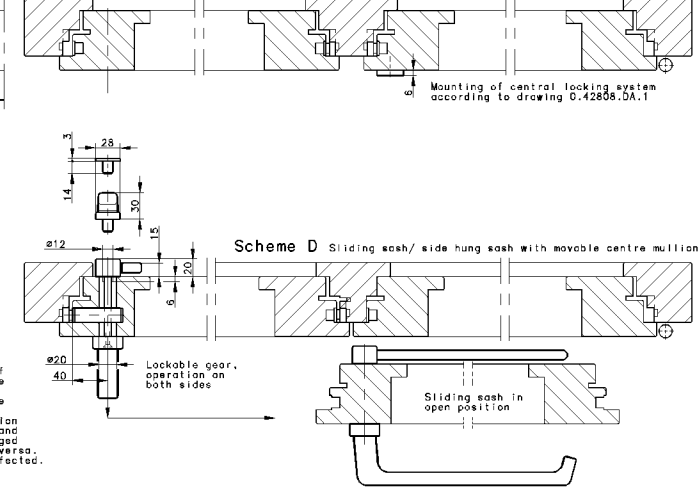
- For positioning plates
Item no. 9-30921-01
- Jig for Euro-groove locking and positioning plates
- SRH 1371-1870
Item no. 9-29154-02
 - SRH 1871-2370
Item no. 9-29154-03
 - SRW 1101-1600
Item no. 9-29154-02
- For positioning plates
Item no. 9-29154-01



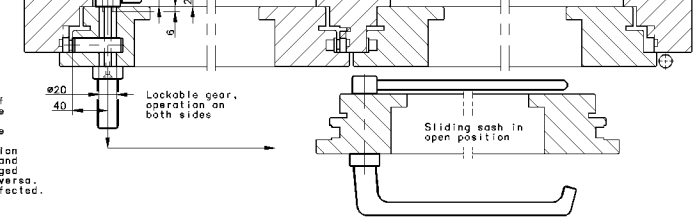
2 sliding sashes mounted in corner position



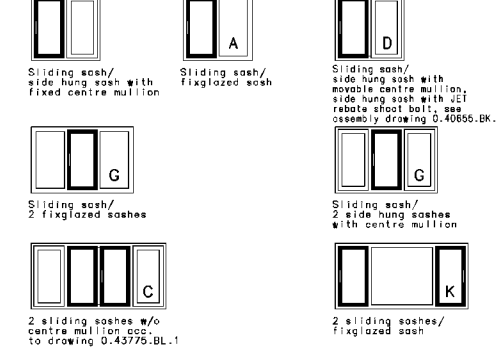
Scheme A Sliding sash/ side hung sash with fixed centre mullion



Scheme D Sliding sash/ side hung sash with movable centre mullion



Scheme A



Description		Parallel Slide and Tilt fittings GU-966/150 mZ for timber Euro-rebate 15x8 and 20x8 Euro-groove 6/8x4 and 7/8x4	
	71252 DITZ/INGEN COPY RIGHTS RESERVED ERSATZ FUER:	43850 BL1	1 2 1 2